

Noguchi Group

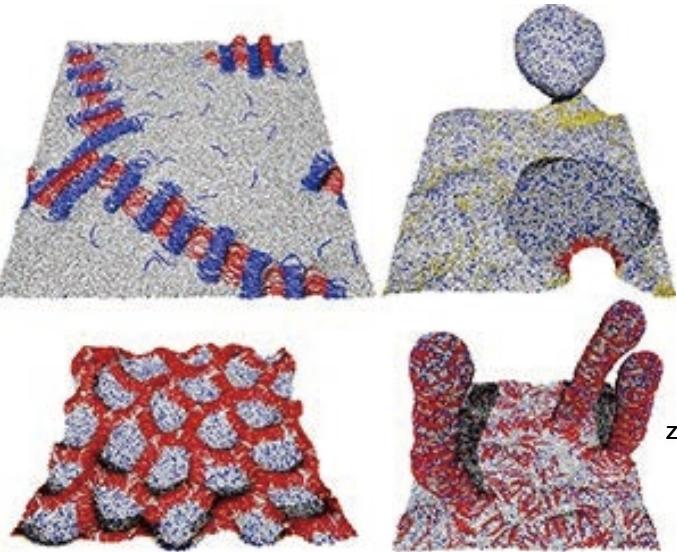


We study soft matter and biophysics using theory and simulation. Many phenomena in living cells are not understood so far. We investigate various structure formations from molecular- to cell-scale from physics viewpoints.

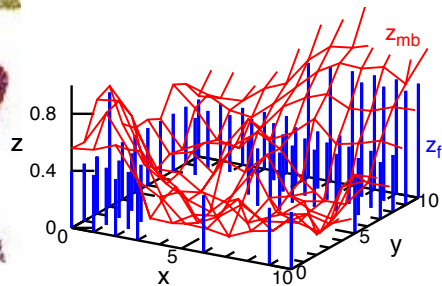
Prof. Hiroshi Noguchi

Research keywords

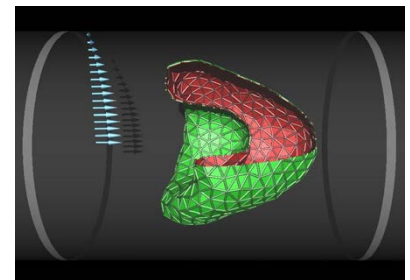
- Nonequilibrium dynamics
- Biomembrane
- Active matter
- Complex fluids



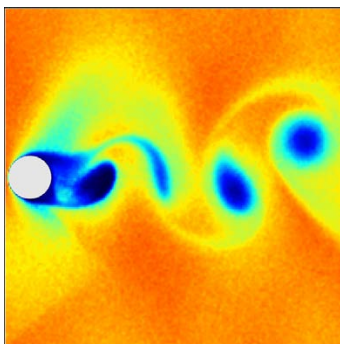
Membrane structure induced by protein binding



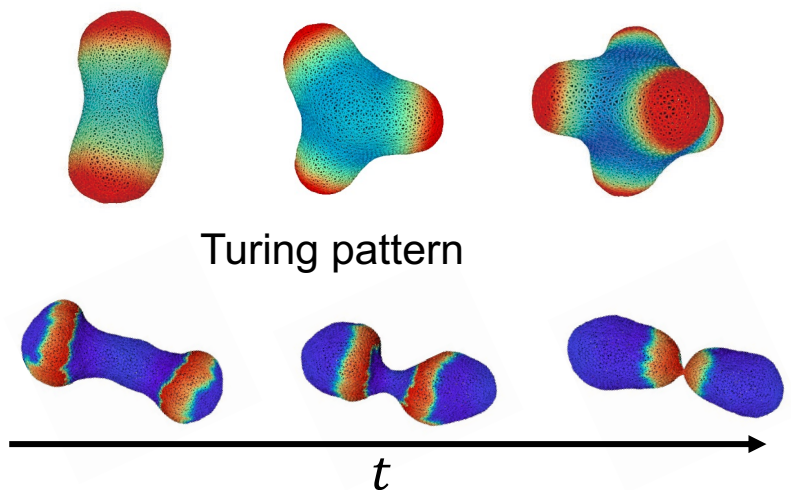
Nonequilibrium fluctuation of membrane



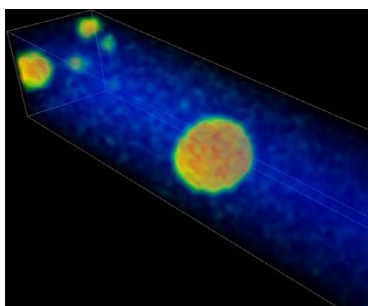
Red blood cell



Flow with phase transition
Cavitation by Karman vortex



Membrane deformation by chemical wave



Cavitation by soundwave

**Massive parallel simulation
using supercomputer**

E-mail: noguchi@issp.u-tokyo.ac.jp

Room: ISSP A509